

AirBench FP

Heavy Duty Downdraught Bench



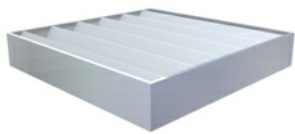
Controls

On/off switch or optional speed control wired to standard I3a plug for rapid installation.



Filter monitoring

By differential pressure gauge



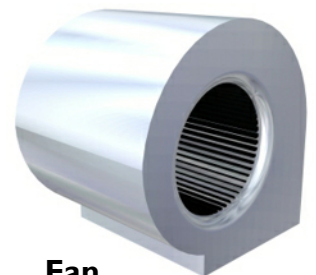
Filters

Selected to suit the application from the full AirBench range.



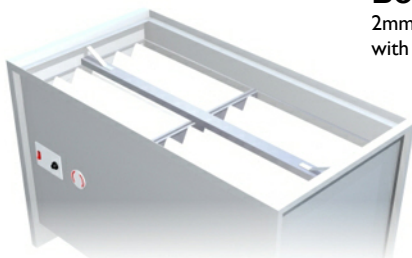
Body

2mm steel plate, fully welded and powder coated, with hinged front cover for ease of maintenance.



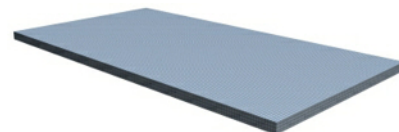
Fan

High powered centrifugal fan
* 2 fans in larger units.



Filter removal

Quickly and simply by removing the top surface. Filters are spring-clamped against soft rubber seals.



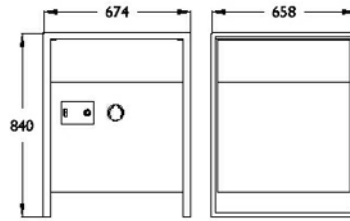
Surface

Heavy duty 3mm perforated steel plate with 4mm dia perforations, powder coated.
* In multiple sections on 975 deep units.

AirBench FP

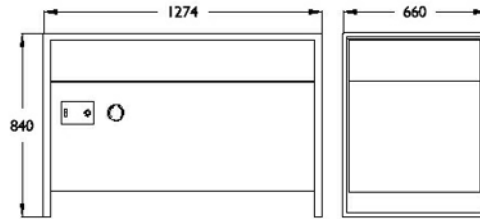
FP066784

Fan Type Forward Curved Centrifugal
Fan Power 170w
Airflow 1000 m3/h - 1.5m/s at surface
Dimensions 674 x 660 x 840 mm
Actual Ventilated Area 610 x 656 mm



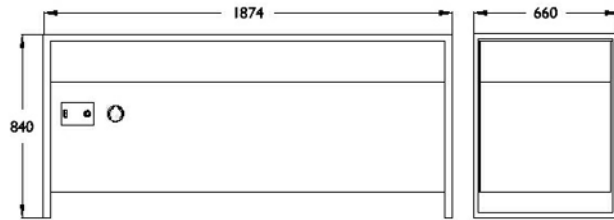
FP126784

Fan Type Forward Curved Centrifugal
Fan Power 550w
Airflow 2000 m3/h - 1.5m/s at surface
Dimensions 1274 x 660 x 840 mm
Actual Ventilated Area 1210 x 656 mm



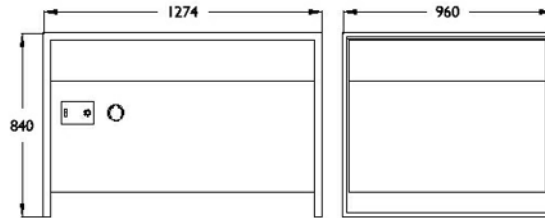
FP186784

Fan Type Forward Curved Centrifugal
Fan Power 570w
Airflow 3000 m3/h - 1.5m/s at surface
Dimensions 1874 x 660 x 840 mm
Actual Ventilated Area 1810 x 656 mm



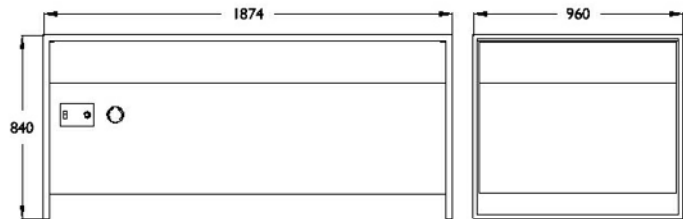
FP129784

Fan Type Forward Curved Centrifugal
Fan Power 570w
Airflow 3000 m3/h - 1.5m/s at surface
Dimensions 1274 x 960 x 840 mm
Actual Ventilated Area 1210 x 956 mm



FP189784

Fan Type 2 x Forward Curved Centrifugal
Fan Power 2 x 570w
Airflow 4500 m3/h - 1.5m/s at surface
Dimensions 1874 x 960 x 840 mm
Actual Ventilated Area 1810 x 956 mm



Available Filter Configurations

- A: Dust
- H: Fine Dust
- B: Very Fine Dust
- L: HEPA Filtered
- E: Fume in Low Volumes
- J: Fume in High Volumes
- R: Special Duty Fume
- S: Solder Fume
- C: Dust with some sparks

General

Power Supply 240v, Single Phase - 110v available
Surface Loading 150kg - Higher loadings on request
Finish Textured grey powder coat - other finishes on request
Noise Levels 63 dBA across range

Specifications vary for some filter configurations - "A" configuration shown.

J and R configurations use deeper filters and lower power fans.

Dimensions nominal; specifications subject to change.