

AirBench FPK

Heavy Duty Downdraught Bench for Seated Working



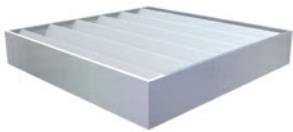
Controls

On/off switch or optional speed control wired to standard I3a plug for rapid installation.



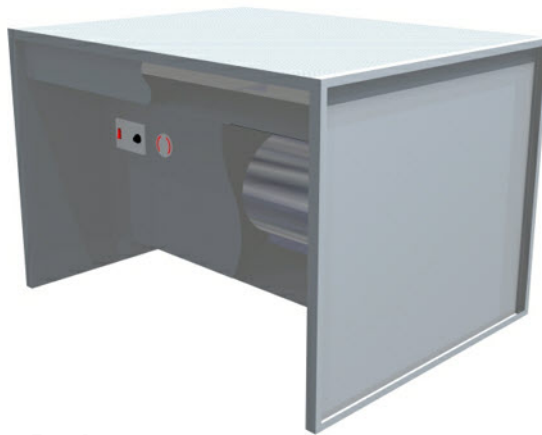
Filter monitoring

By differential pressure gauge



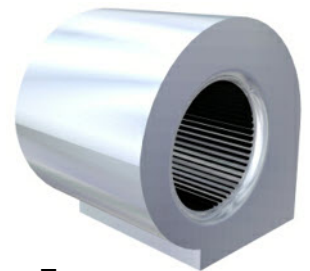
Filters

Selected to suit the application from the full AirBench range.



Body

2mm steel plate, fully welded and powder coated.



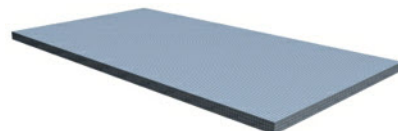
Fan

High powered centrifugal fan
* 2 fans in larger units.



Filter removal

Quickly and simply by removing the top surface.
Filters are spring-clamped against soft rubber seals.



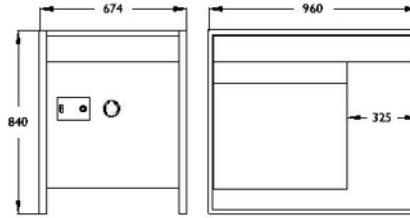
Surface

Heavy duty 3mm perforated steel plate with 4mm dia perforations, powder coated.
* In multiple sections on 975 deep units.

AirBench FPK

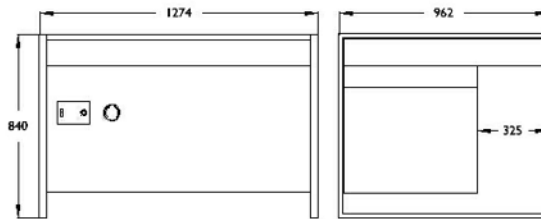
FPK069084

Fan Type	Forward Curved Centrifugal
Fan Power	170w
Airflow	1000 m ³ /h - 1.5m/s at surface
Dimensions	674 x 960 x 840 mm
Actual Ventilated Area	610 x 650 mm



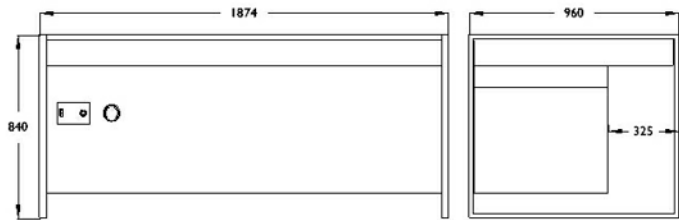
FPK129084

Fan Type	Forward Curved Centrifugal
Fan Power	550w
Airflow	2000 m ³ /h - 1.5m/s at surface
Dimensions	1274 x 960 x 840 mm
Actual Ventilated Area	1210 x 650 mm



FPK189084

Fan Type	Forward Curved Centrifugal
Fan Power	570w
Airflow	3000 m ³ /h - 1.5m/s at surface
Dimensions	1874 x 960 x 840 mm
Actual Ventilated Area	1810 x 650 mm



Available Filter Configurations

- A: Dust
- H: Fine Dust
- B: Very Fine Dust
- L: HEPA Filtered
- E: Fume in Low Volumes
- S: Solder Fume
- C: Dust with some sparks

General

- Power Supply** 240v, Single Phase - 110v available
 - Surface Loading** 150kg - Higher loadings on request
 - Finish** Textured grey powder coat - other finishes on request
 - Noise Level** 63dBa average across range
- Specifications vary for some filter configurations - "A" configuration shown.

Dimensions nominal; specifications subject to change.