

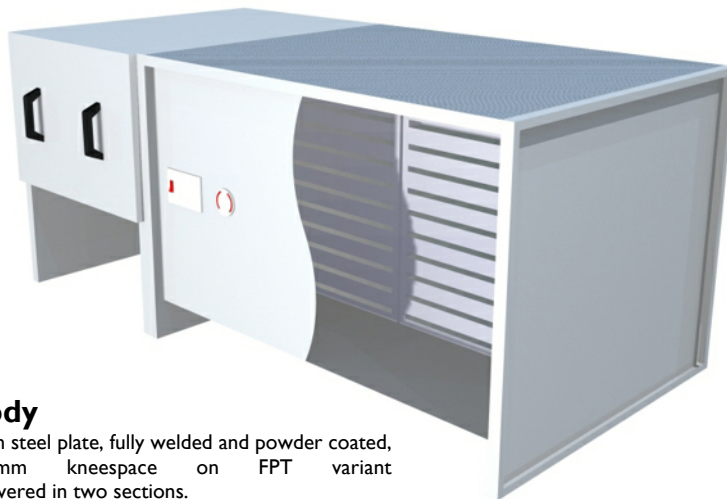
# AirBench FPW and FPT

Heavy Duty Downdraught Benches for Welding and Grinding



### Controls

On/off switch wired to standard 13a plug for rapid installation.



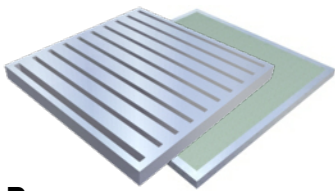
### Body

2mm steel plate, fully welded and powder coated, 300mm kneespace on FPT variant. Delivered in two sections.



### Filter monitoring

By differential pressure gauge



### Prefilters

Unique two-stage spark filtration system



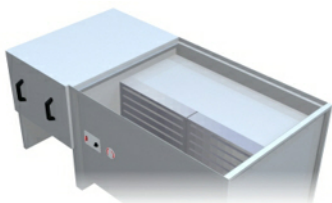
### Fan

High powered backward curved centrifugal fan



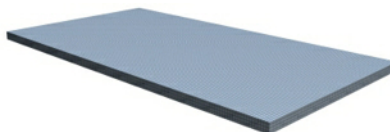
### Main filter

High capacity main filter housed to left of main body for spark protection



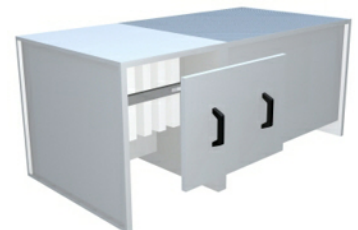
### Prefilter access

Quickly and simply by lifting surfaces



### Surface

Heavy duty 3mm perforated steel plate with 4mm dia perforations, powder coated. In two sections, total 1200 x 600 ventilated area



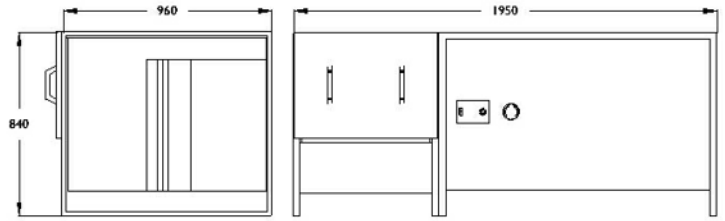
### Main filter access

Via removal of front panel on filter unit

# AirBench FPW and FPT

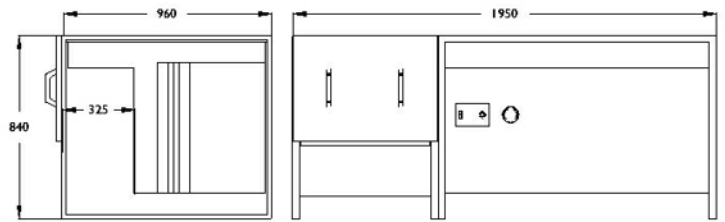
## FPW209084

<b>Fan Type</b>	Backward Curved Centrifugal
<b>Fan Power</b>	570w
<b>Airflow</b>	2000 m <sup>3</sup> /h - 1.5m/s at surface
<b>Dimensions</b>	1950 x 960 x 840 mm
<b>Actual Ventilated Area</b>	1210 x 650 mm



## FPT209084

<b>Fan Type</b>	Backward Curved Centrifugal
<b>Fan Power</b>	570w
<b>Airflow</b>	2000 m <sup>3</sup> /h - 1.5m/s at surface
<b>Dimensions</b>	1950 x 960 x 840 mm
<b>Actual Ventilated Area</b>	1210 x 650 mm



### Available Filter Configurations

D: Weld fume and Fine Dusts  
K: Grinding Dust

### General

<b>Power Supply</b>	240v, Single Phase
<b>Surface Loading</b>	150kg - Higher loadings on request
<b>Finish</b>	Textured grey powder coat - other finishes on request
<b>Noise Level</b>	63 dBa average across range

Specifications vary for some filter configurations.  
Dimensions nominal; specifications subject to change.