



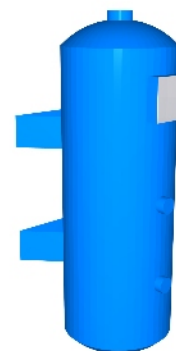
AirBench RP

The UK's most advanced downdraught bench - with automated filter cleaning.



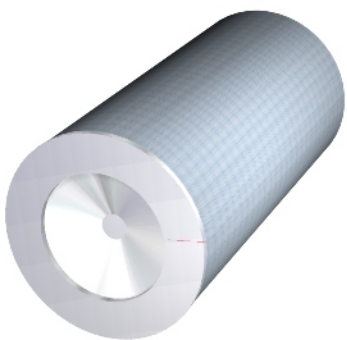
Body

2mm steel plate, fully welded and powder coated.
Quick release front cover for dust disposal.



Filter Cleaning

On board compressed air tank cleans filters using high pressure air pulse.
Requires clean air supply.



Filters

Long life cartridge filters designed for cleaning with compressed air.
Available with anti-static coating.



Fan

High powered centrifugal fan with energy efficient EC Motor



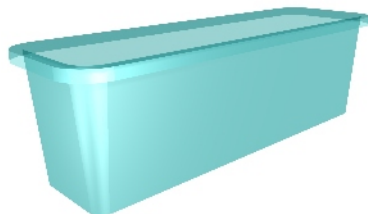
Controls

Simple two-button operation with intelligent control.
Press and hold Green to clean filters.



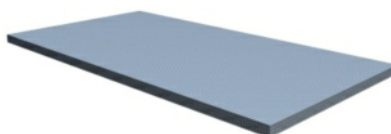
Filter monitoring

By differential pressure gauge



Dust removal

Dust is deposited into plastic bins for easy disposal.



Surface

Heavy duty 3mm perforated steel plate with 4mm dia perforations, powder coated.
In 2 sections for ease of access.



+44 (0) 1206 791191

sales@airbench.com

www.airbench.com

14 Grange Farm Road, Colchester CO2 8JW

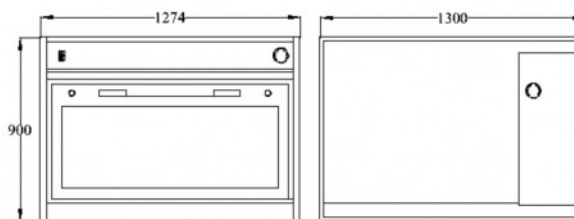




Available Models

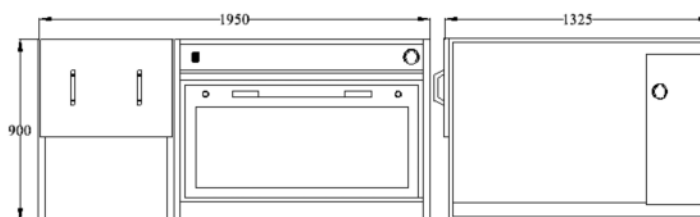
RP1212

| | |
|-------------------------------|-------------------------------|
| Fan Type | Forward Curved Centrifugal |
| Fan Power | .74kw |
| Airflow | 4500 m3/h - 1.5m/s at surface |
| Dimensions | 1274 x 1300 x 900 mm |
| Actual Ventilated Area | 1210 x 950 mm |



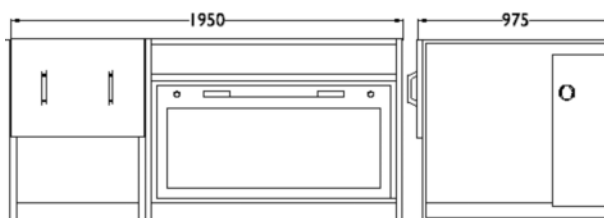
RPL1212 (HEPA Filtered)

| | |
|-------------------------------|-------------------------------|
| Fan Type | Forward Curved Centrifugal |
| Fan Power | 1.1kw |
| Airflow | 4500 m3/h - 1.5m/s at surface |
| Dimensions | 1950 x 1325 x 900 mm |
| Actual Ventilated Area | 1210 x 950 mm |



RP1920

| | |
|-------------------------------|-------------------------------|
| Fan Type | Forward Curved Centrifugal |
| Fan Power | 1.1kw |
| Airflow | 4500 m3/h - 1.5m/s at surface |
| Dimensions | 1950 x 975 x 900 mm |
| Actual Ventilated Area | 1210 x 950 mm |



Self-cleaning filter system - Filters are cleaned by compressed air pulse, into lightweight bins for quick disposal.



Intelligent Control - Two button operation - Green to go; Red to stop; Hold Green to clean filters.



Single phase operation - Operates from a standard 240v single phase socket.



Energy Efficient - EC Fan Technology allows single phase low voltage operation -

Available Filter Configurations

Standard Cartridge Filter
Anti Static Cartridge Filter

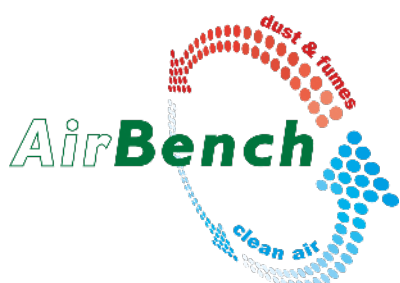
RPL Includes H12 HEPA Final Filter

General

| | |
|------------------------|---|
| Power Supply | 240v, Single Phase. |
| Surface Loading | 150kg as standard - Higher loadings to 500kg on request |
| Finish | Textured grey powder coat - other finishes on request |
| Noise Level | <70 dBA average across range (excluding pulse) |

Requires clean filtered compressed air at 4 bar.

Dimensions nominal; specifications subject to change.



+44 (0) 1206 791191

sales@airbench.com

www.airbench.com

14 Grange Farm Road, Colchester CO2 8JW

