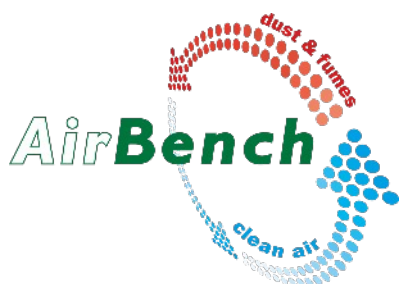




OMF2500



+44 (0) 1206 791191

[sales@airbench.com](mailto:sales@airbench.com)

[www.airbench.com](http://www.airbench.com)

14 Grange Farm Road, Colchester CO2 8JW

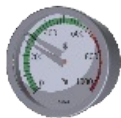




## TECHNICAL SPEC

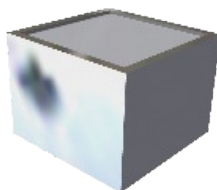
### Filter Gauges

Large face 0-1000Pa gauges complete with 'filter full' indicator



### HEPA cartridge

Designed to remove submicronic particulate with an efficiency of 99.9%



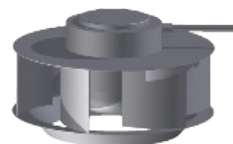
### Pre-Filter

High efficiency filter media construction for oil/coolant mist with 'non clogging' properties and long filter life (washable). 2 fitted in this unit.



### Isolator and indicators

Rotary isolator and on/off/error indicators.



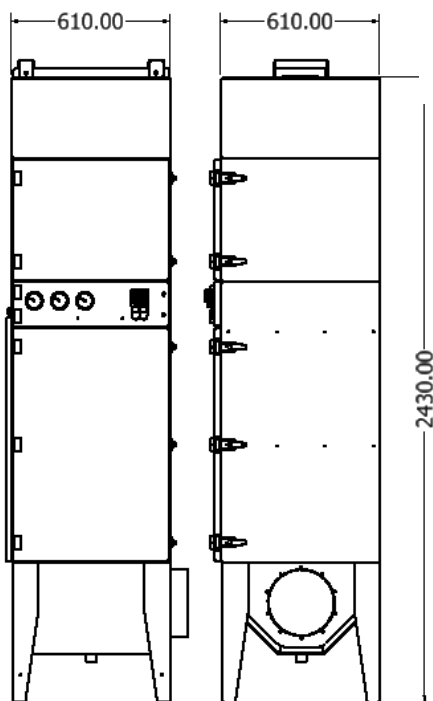
### Fan

1700w high power backward curve centrifugal fan.



### Filter Clamp Mechanism

Spring loaded roller bearing filter clamp mechanism with tubular handles for securing filters



**Fan Type**  
**Fan Power**  
**Airflow**  
**Dimensions**  
**Inlet**  
**Colour**

Backward Curved Centrifugal  
1700w  
2500m<sup>3</sup>/h Nominal  
610x610x2430 mm  
200mm Clipped Ducting  
RAL7035 as standard

+44 (0) 1206 791191

sales@airbench.com

www.airbench.com

14 Grange Farm Road, Colchester CO2 8JW

