



// FEATURES

- Advanced oil skimmer system
- Horizontal impeller attracts tramp oil to belt for improved capture
- Adjustable stand
- Speed control for efficient operation
- PEO coated pulley system
- Stainless steel discharge chute
- Timer and coolant temperature display

// APPLICATIONS

Designed for ongoing use on single machines or portable for multiple machine installations.

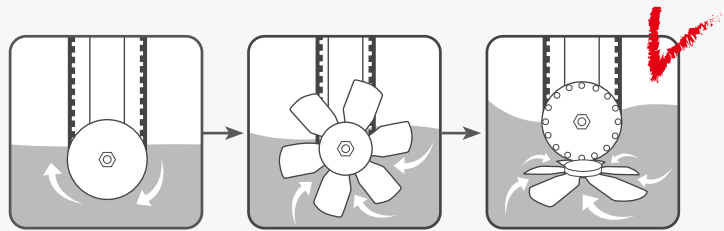
// BENEFITS

Proper control of tramp oil increases coolant life and reduces bacteria.

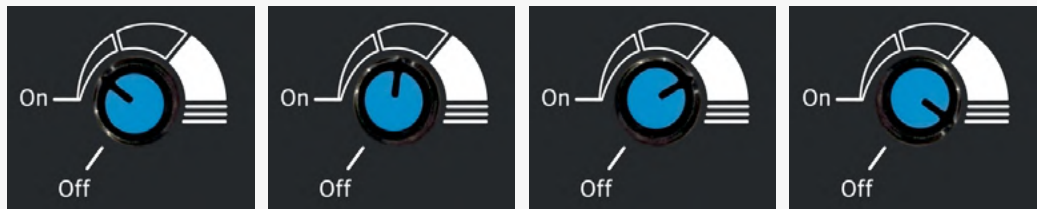


Horizontal impeller induces vortex

Improves capture of tramp oil by drawing in contaminants.



Speed Control for efficient operation

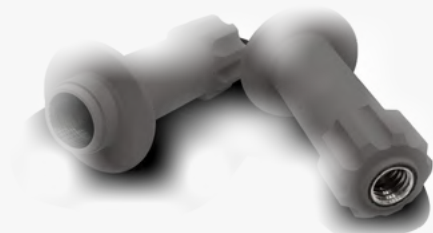


Light lubricant loading << **Recommended** >> Heavy lubricant loading



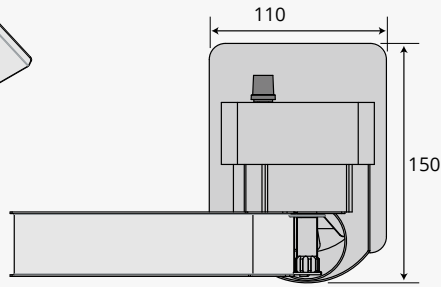
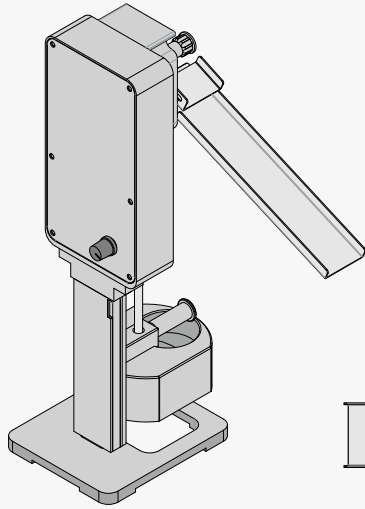
PEO Coating

Improved anti-corrosion performance

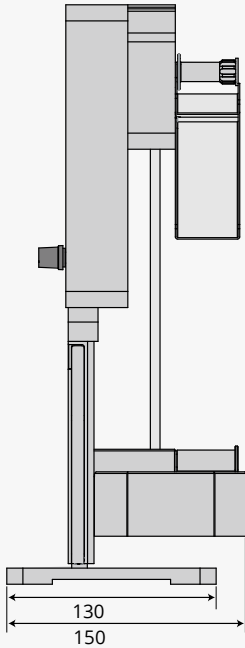


PEO coating on Top pulley

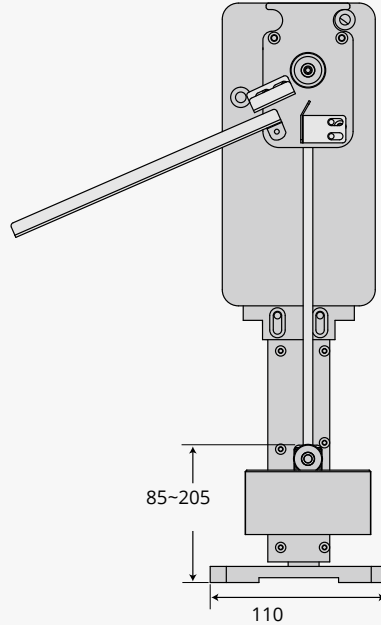
DIMENSIONS



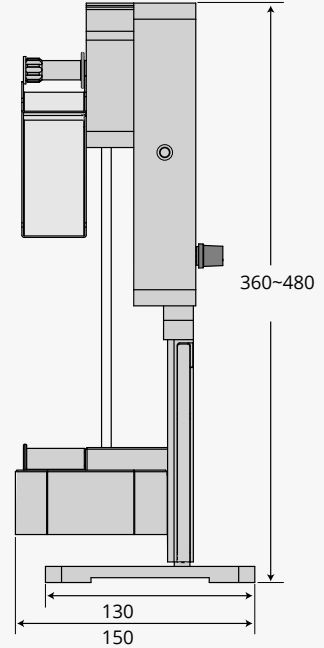
Top



Left side



Front



Right side

// GENERAL

POWER SUPPLY	100-240v AC Input DC Converter	DIMENSIONS (FOOT)	110 x 130
WEIGHT	2.6kg	DIMENSIONS (OVERALL)	110 x 150 x 360-480