

// AIRBENCH MODRACK



MODULAR RACKING AND ASSEMBLY SYSTEM



// FEATURES

- Assembly bench system
- Modular and easy to update
- Enables addition of further accessories

/ OPTIONS

- Storage
- Power and air connections
- Lighting



// STANDARD ENCLOSURE

500mm high enclosure with plain rear panel

Enables addition of racking, lighting, and alternative service panels

// SUPPORT RAILS

Bolted to rear enclosure panel to support lighting and shelving

Adjustable - can be mounted at any height

Requires enclosure



// SHELF

300mm deep shelf for parts storage

Requires enclosure and support rails

// LIGHT

LED panel lighting on frame to illuminate workspace.

Requires enclosure and support rails



// PARTS BIN RAILS

Alternative rear enclosure panel with rails for parts bins.

Requires enclosure

SERVICES



// DOUBLE SOCKET SERVICE PANEL

Replacement service panel with double socket

Requires standard enclosure.

Power from external supply or AirBench outlet.

// AIRLINE SERVICE PANEL

Replacement service panel with 4 x series 19 pushfit airline connectors

Requires external air supply and standard enclosure



// AIRLINE / SOCKET SERVICE PANEL

Replacement service panel with double socket and airline connectors

Requires external air supply and standard enclosure

Power from external supply or AirBench outlet

// 110v SERVICE PANEL

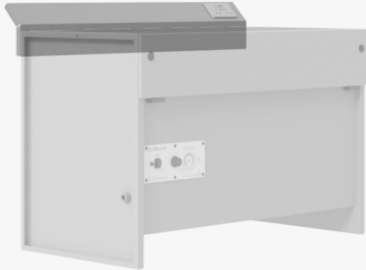
Replacement service panel with twin 110v sockets

Requires external 110v supply and standard enclosure

Power from external supply or optional transformer



SERVICE CHANNEL



// DOUBLE SOCKET SERVICE CHANNEL

Service channel with double socket

Requires standard enclosure.

Power from external supply or AirBench outlet.

// AIRLINE SERVICE CHANNEL

Service channel with 4 x series 19 pushfit airline connectors

Requires external air supply and standard enclosure



// AIRLINE / SOCKET SERVICE CHANNEL

Service channel with double socket and airline connectors

Requires external air supply and standard enclosure

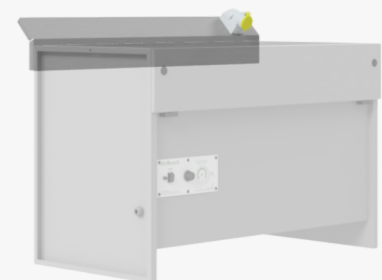
Power from external supply or AirBench outlet

// 110v SERVICE CHANNEL

Service channel with twin 110v sockets

Requires external 110v supply and standard enclosure

Power from external supply or optional transformer



// AIRBENCH MODRACK



DATA

// GENERAL

COMPATIBILITY	All AirBench Models	FINISH (STD)	Textured grey powder coat
----------------------	---------------------	---------------------	---------------------------

// NOTES

AIRLINE	Requires external compressed air supply Series 19 push fit as standard Other connectors as options
240v SOCKETS	Require external 240v power supply OR may be connected to AirBench supply. When connected to AirBench supply, total load including AirBench must be less than 13a.
110v SOCKETS	Require external 110v power supply OR may be connected to transformer housed in AirBench body. When connected to transformer, total load including AirBench and transformer supply must be less than 13a.

