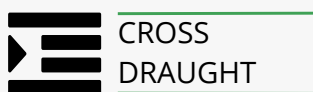


## DOWNFLOW BOOTH



### // FEATURES

- 5 standard sizes up to 6m width.
- Two stage filtration
- UK manufacture
- Various options available



### // CONSTRUCTION

- 2mm steel, fully welded
- T304 Stainless Steel construction
- Also available in powder coated mild steel

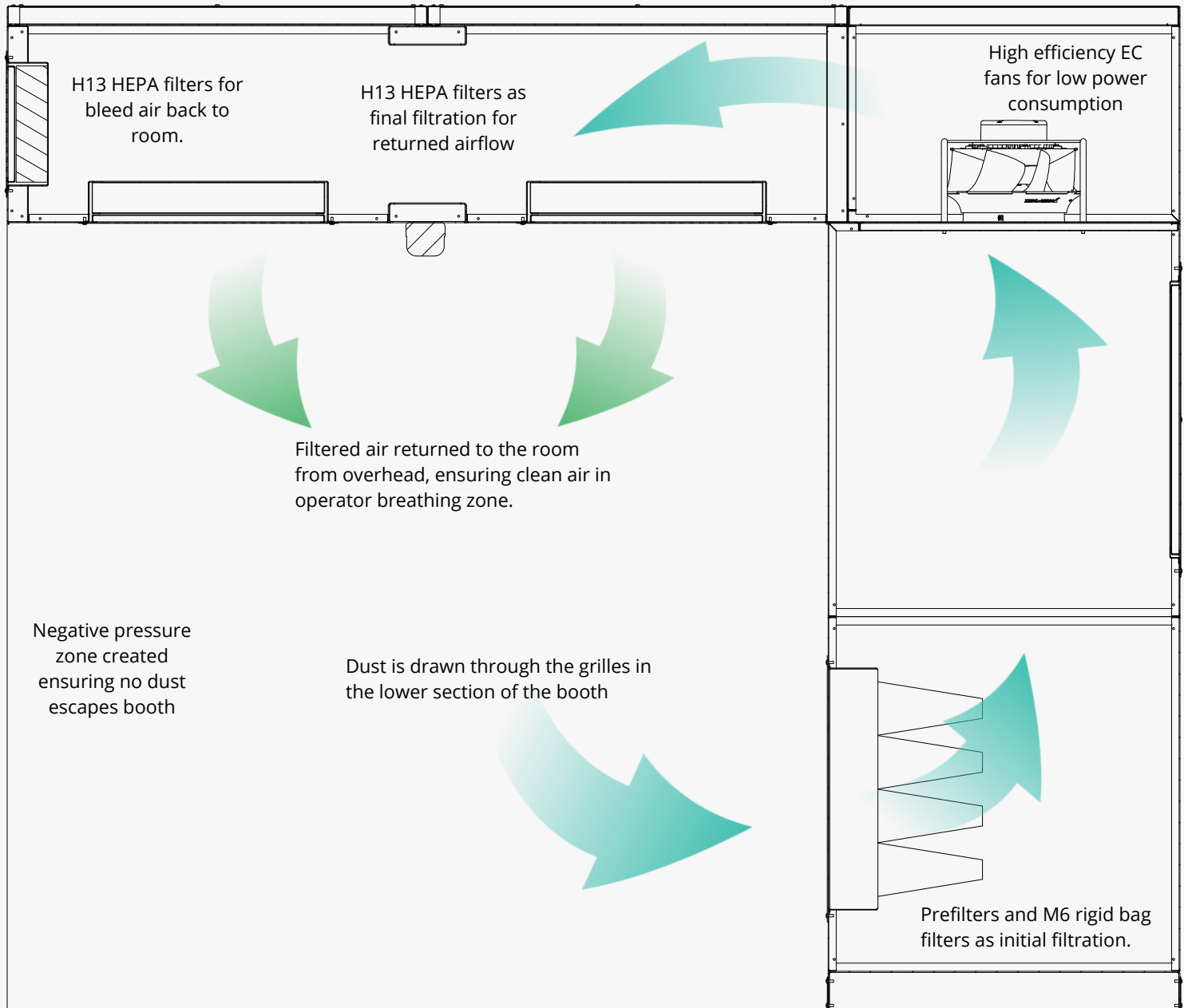


### // APPLICATIONS

- Ideal for high-cleanliness environments
- Food industry
- Pharmaceuticals



## HOW DFB WORKS



## FEATURES



### // 5 STANDARD SIZES AND MULTIPLE FINISH OPTIONS

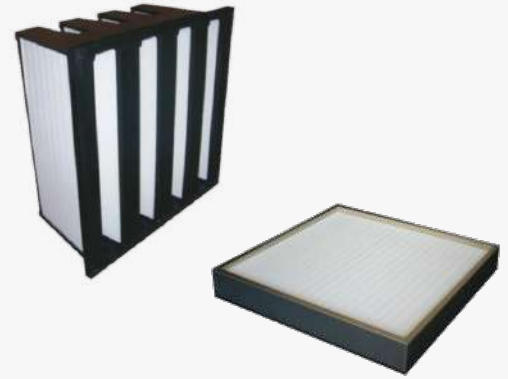
DFB is available in 5 different widths - ranging from 2 to 6m.

Alternative finish options are also available; including powder coated mild steel.

### // FILTER OPTIONS

Three stage filtration system as standard.

Primary filtration includes G4 Panel filters and M6 Rigid Bag Filters.



H13 HEPA Filters in the top section of the booth for both downflow air and bleed air back to room..

### // HIGH EFFICIENCY FANS

Our low energy fans allow us to move large volumes of air, at low power.

EC Technology permits simple low voltage control, or central management.



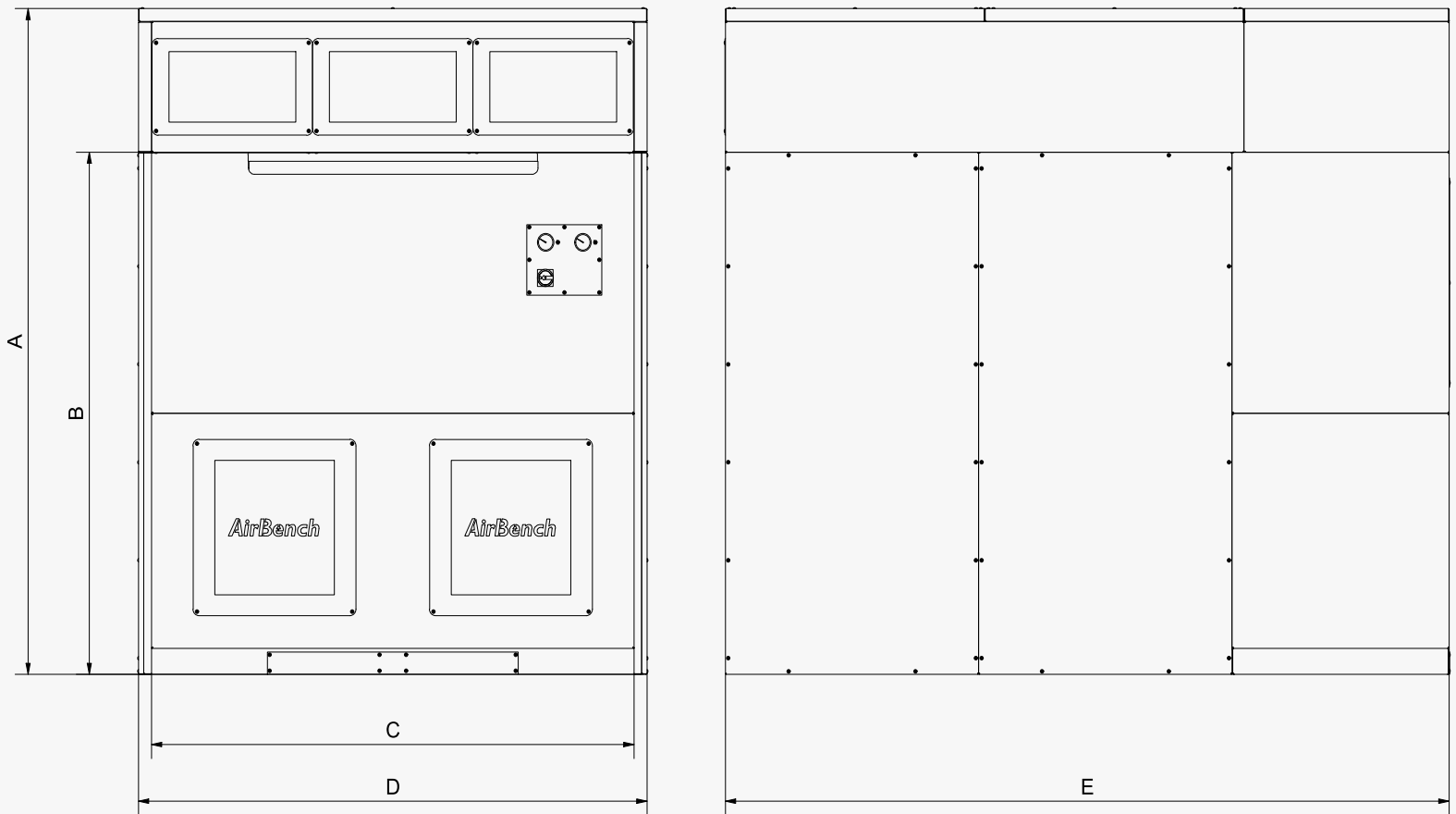
### // CONTROLS

Ranging from a simple on/off switch on a single unit, to centrally controlled, daisy chained systems for multiple installations.

Speed control is available as a simple option. Every unit is fitted with filter condition monitoring via a pressure loss gauge.



## DIMENSIONS



## // TECHNICAL DATA

MODEL	OVERALL					VENTILATED AREA		POWER kw	VOLUME M3/H
	HEIGHT 'A'	HEIGHT 'B'	WIDTH 'C'	WIDTH 'D'	DEPTH 'E'	WIDTH	HEIGHT		
DFB2000	2550	2000	2000	2108	3000	1000	1000	1.8	7000
DFP3000	2550	2000	3000	3108	3000	1500	1500	3.6	10500
DFB4000	2550	2000	4000	4108	3000	2000	2000	3.6	14000
DFB5000	2550	2000	5000	5108	3000	2500	2500	7.2	17500
DFB6000	2550	2000	6000	6108	3000	3000	3000	7.2	21000

## SPECIFICATIONS

### // GENERAL

<b>POWER SUPPLY</b>	400v/3ph	<b>MOTOR</b>	High Efficiency EC Fan
<b>NOISE LEVEL</b>	<80dBA at 1m	<b>FINISH</b>	T304 stainless steel as standard Optional T316 or powder coated mild steel

### // SEE ALSO

VertEx VA - Cross-draught Extraction System	VertEx Booth - Modular Booth
---	------------------------------